

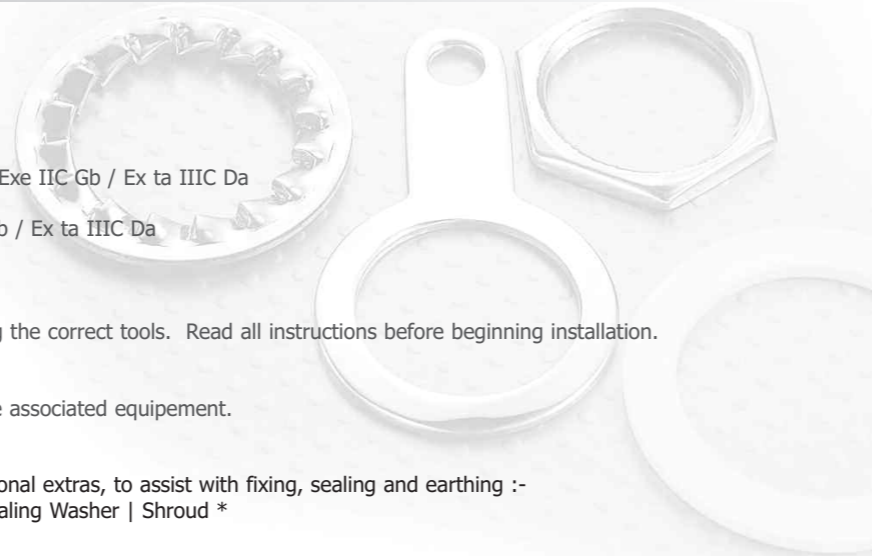
TECHNICAL DATA
 ADAPTOR TYPE : 780
 INGRESS PROTECTION : IP66
 PROCESS CONTROL SYSTEM : BS EN ISO 9001 - 2000

HAZARDOUS AREA CLASSIFICATION
 ATEX CERTIFICATION No : SIRA10ATEX1306U
 ATEX CERTIFICATION CODE : II 2 GD Exd IIC Gb / Exe IIC Gb / Ex ta IIIC Da
 IEC Ex CERTIFICATION No : IECEx SIR.10.0148U
 IEC Ex CERTIFICATION CODE : Ex d IIC Gb / Ex e IIC Gb / Ex ta IIIC Da

INSTALLATION INSTRUCTIONS
 Installation should only be performed by a competent person using the correct tools. Read all instructions before beginning installation.

SPECIAL CONDITIONS FOR SAFE USE
 1. Only one union is to be used with any single cable entry on the associated equipment.

ACCESSORIES
 The following accessories are available from CMP Products, as optional extras, to assist with fixing, sealing and earthing :-
 Locknut | Earth Tag | Serrated Washer | Entry Thread (I.P.) Sealing Washer | Shroud *



Ordering Reference	Male Forward Thread Size	Minimum Thread Length	Female Rear Thread Size	Bore Diameter	Protrusion Length	Across Flats	Across Corners	Installation Torque (Nm)
780DM2M2	M20 X 1.5	15.0	M20 X 1.5	14.3	50.0	46.0	49.7	7
780DM3M3	M25 X 1.5	15.0	M25 X 1.5	20.3	50.0	49.0	52.9	10
780DM4M4	M32 X 1.5	15.0	M32 X 1.5	26.8	50.0	55.0	59.4	15
780DM5M5	M40 X 1.5	15.0	M40 X 1.5	32.7	50.0	65.0	70.2	25
780DM6M6	M50 X 1.5	15.0	M50 X 1.5	44.6	50.0	70.0	75.6	30
780DM7M7	M63 X 1.5	15.0	M63 X 1.5	56.5	50.0	85.0	91.8	45
780DM8M8	M75 X 1.5	15.0	M75 X 1.5	68.5	50.0	100.0	108.0	45
780DM9M9	M90 X 2.0	15.0	M90 X 2.0	81.0	65.0	113.0	122.0	45
780DM10M10	M100 X 2.0	15.0	M100 X 2.0	91.3	65.0	125.0	135.0	210

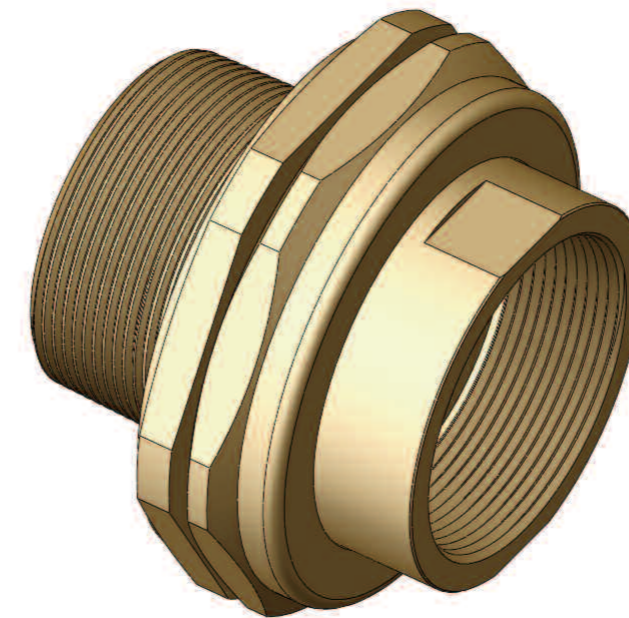
All dimensions in millimeters unless otherwise stated

ASSEMBLY FITTING INSTRUCTIONS FOR INSTALLATION OF CMP UNION TYPE 780

UNION TYPE 780 FOR CONNECTING CONDUITS TO ENCLOSURES OR CONDUITS TO EACH OTHER.

**INCORPORATING EC DECLARATION OF CONFORMITY TO
DIRECTIVE 94/9/EC**

TYPE 780 UNION



I, the undersigned, hereby declare that the equipment referred to herein conforms to 94/9/EC directive.

G. I. Mood

Dr Geof Mood - Technical Director - (Authorised Person)

Glasshouse Street • St. Peters • Newcastle upon Tyne • NE6 1BS
 Tel: +44 191 265 7411 • Fax: +44 191 265 0581
 E-Mail: cmp@cmp-products.co.uk • Web: www.cmp-products.com

CE 0518

Notified Body: Sira Certification Service, Rake Lane, Chester CH4 9JN, England.



CMP PRODUCTS



CMP PRODUCTS

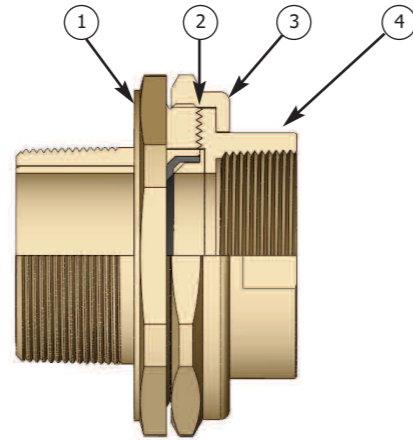


www.cmp-products.com

INSTALLATION INSTRUCTIONS FOR TYPE 780 UNION

UNION COMPONENTS

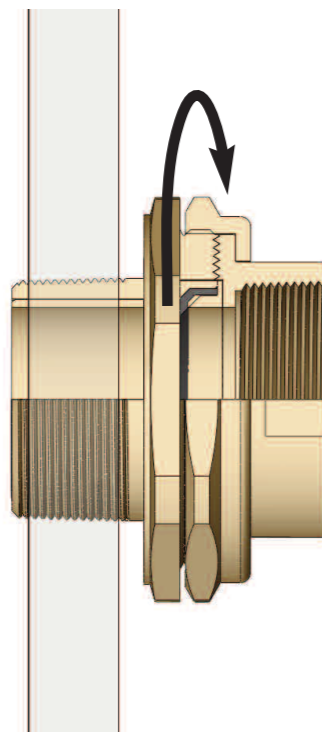
1. Entry Item
2. Serrated Flamepath
3. Nut
4. Conduit Connector



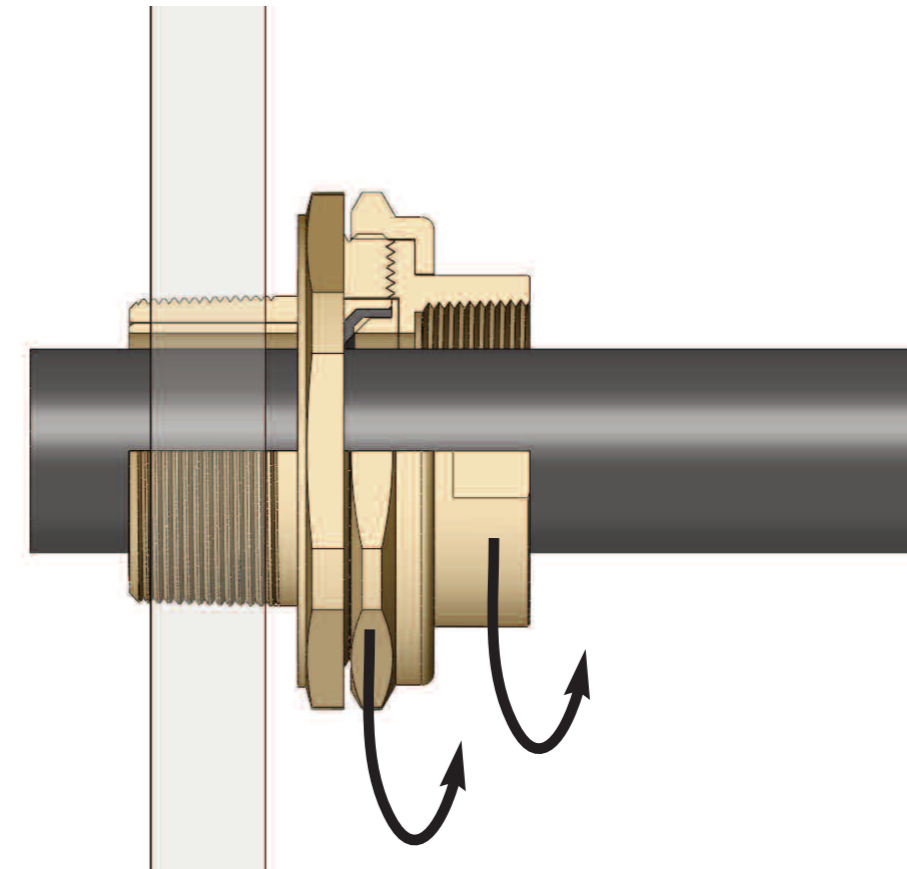
NOTE: THERE IS NO NEED TO DISSASSEMBLE THE UNION

PLEASE READ ALL INSTRUCTIONS CAREFULLY BEFORE BEGINNING THE INSTALLATION

1. Attach the union entry item (1) to the enclosure and fully tighten using a spanner.



2. Slacken the nut (3) slightly to allow the conduit connector to turn relative to the entry item (1). Connect the conduit to the conduit connector and fully tighten.



3. Fully tighten the nut (3) to ensure that the elements forming the serrated flamepath (2) are closely engaged.

