

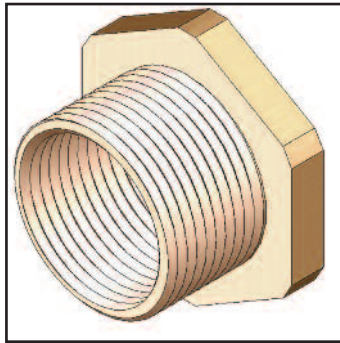
INSTRUCTIONS INSTALLATION FOR CMP ADAPTORS/REDUCERS TYPE 737 AND 797

ADAPTORS AND REDUCERS FOR USE IN HAZARDOUS AREAS TO CHANGE THE SIZE, TYPE OR GENDER OF A THREADED COMPONENT.

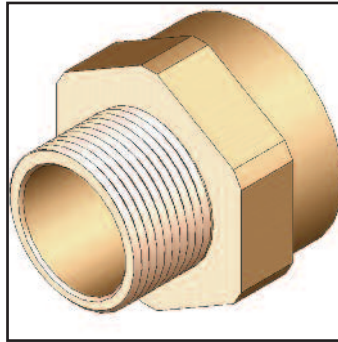
INCORPORATING EC DECLARATION OF CONFORMITY TO DIRECTIVE 94/9/EC

TYPE 737 AND 797 ADAPTORS / REDUCERS

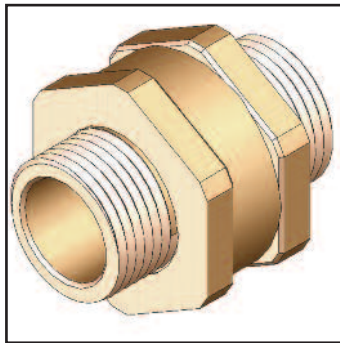
737
REDUCER



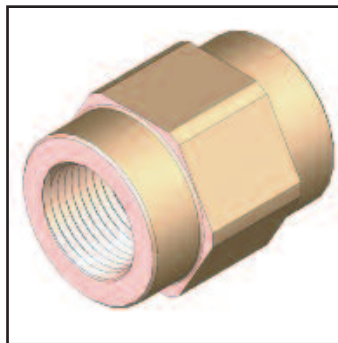
737 ADAPTOR



797
ADAPTOR
MALE TO MALE



797
ADAPTOR
FEMALE TO FEMALE



TYPE 737 ADAPTOR

- Female thread size is the same size or larger than the male thread.

TYPE 737 REDUCER

- Female thread size is smaller than the male thread.

TYPE 737 R

- 737 Adaptor or Reducer incorporating an O ring thread seal.

TYPE 797 ADAPTOR

- Adaptor to change a thread gender.



CMP PRODUCTS

The 737 Adaptors and Reducers, and 797 Adaptors are available in metal for use in Ex d and Ex e environments.


The 737 Adaptors and Reducers are also available in nylon for Ex e environments only.



TECHNICAL DATA

CABLE GLAND TYPE : 737 and 797
 INGRESS PROTECTION : IP66, IP67, IP68, Enclosure Type 4X
 PROCESS CONTROL SYSTEM : BS EN ISO 9001

HAZARDOUS AREA CLASSIFICATION

ATEX CERTIFICATION No : SIRA 01ATEX1284U & SIRA 02ATEX1003X
 ATEX CERTIFICATION CODE :  II 2 GD Ex d IIC / Ex e II
 IEC Ex CERTIFICATION No : IEC Ex SIR.07.0052X
 IEC Ex CERTIFICATION CODE : Ex d IIC / Ex e II / Ex nR II / Ex tD A21 IP66
 : Ex d I / Ex e I
 cCSAus CERTIFICATION No. : 1055233 (Metallic only)
 cCSAus CERTIFICATION CODE : Class I Groups A. B. C and D
 : Class I Zone 1 AEx de II
 : Ex de II

INSTALLATION INSTRUCTIONS

Installation should only be performed by a competent person using the correct tools. Ensure thread type and size are compatible with the associated enclosure / fitting threads. Fully tighten threads

SPECIAL CONDITIONS FOR SAFE USE

1. Only one device shall be used per cable entry
2. The interfaces between the male thread of an adaptor / reducer and the female thread of an enclosure cannot be defined. Therefore it is the installer's responsibility to ensure that the appropriate ingress protection level is maintained at this interface.
3. Type 737 and 797 non-metallic and aluminium adaptors must not be used in Group I applications.
4. Non-metallic adaptors and reducers shall only be used in the temperature range of -20°C to +60°C.
5. Cable glands used with non-metallic adaptors and reducers shall be non-metallic and of the A2 type.

ACCESSORIES

The following accessories are available from CMP Products, as optional extras, to assist with fixing, sealing and earthing :-
 Locknut | Earth Tag | Serrated Washer | Entry Thread (I.P.) Sealing Washer | Shroud *

Male Thread (mm)	Female Thread (mm)	737	797 (Female to Female)	797 (Male to Male)	Max Installation Torque (Nm)
16	16	737DM1M1	797DM1FM1F	797DM1MM1M	7
20	20	737DM2M2	797DM2FM2F	797DM2MM2M	7
25	25	737DM3M3	797DM3FM3F	797DM3MM3M	10
32	32	737DM4M4	797DM4FM4F	797DM4MM4M	15
40	40	737DM5M5	797DM5FM5F	797DM5MM5M	25
50	50	737DM6M6	797DM6FM6F	797DM6MM6M	30
63	63	737DM7M7	797DM7FM7F	797DM7MM7M	45
75	75	737DM8M8	797DM8FM8F	797DM8MM8M	45
90	90	737DM9M9	797DM9FM9F	797DM9MM9M	45
100	100	737DM10M10	797DM10FM10F	797DM10MM10M	45

Dimensions are displayed in millimetres unless otherwise stated

Note:

1. Female thread sizes can be up to two sizes larger than the male threads or any size smaller, e.g. 737DM1M3
2. 737 Adaptors / Reducers are available with an integral entry thread seal. Select this version by adding "R" after 737D, e.g. 737DRM7M7
3. Other materials and thread types are available, consult CMP website (www.cmp-products.com) for details

I, the undersigned, hereby declare that the equipment referred to herein conforms to 94/9/EC directive.

Ge. I. Mood

Dr Geof Mood - Technical Director - (Authorised Person)

Glasshouse Street • St. Peters • Newcastle upon Tyne • NE6 1BS
 Tel: +44 191 265 7411 • Fax: +44 191 265 0581
 E-Mail: cmp@cmp-products.com • Web: www.cmp-products.com

CE 0518

Notified Body: Sira Certification Service, Rake Lane, Chester CH4 9JN, England.

